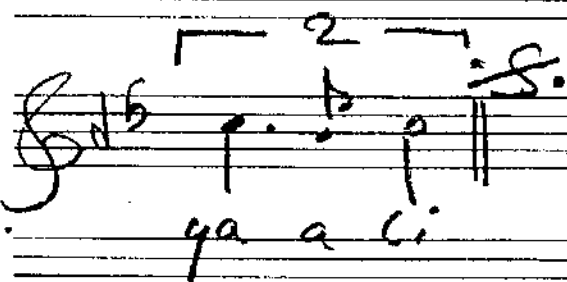
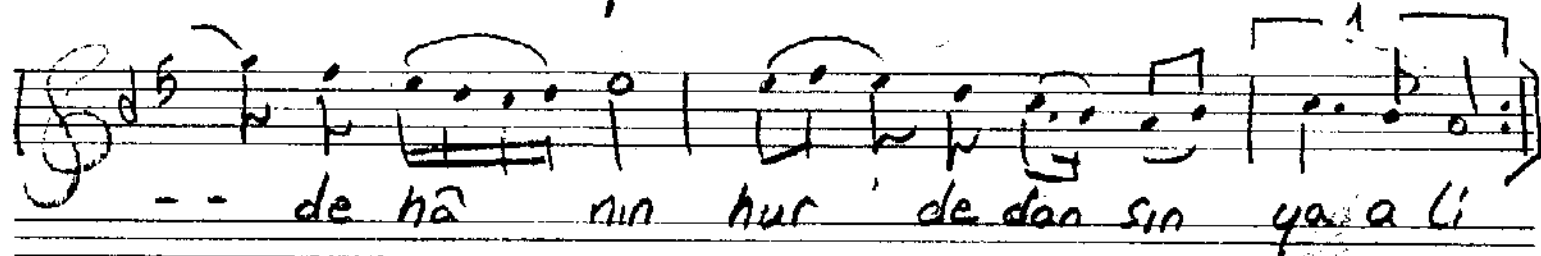
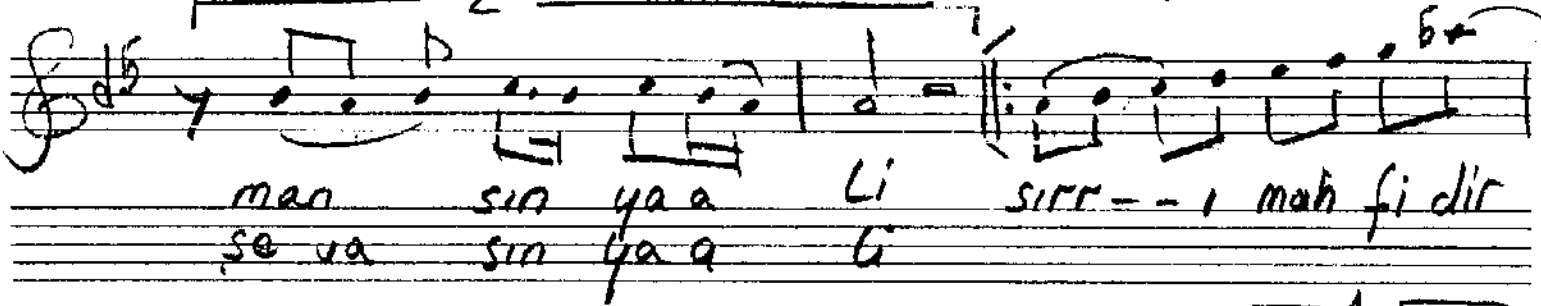
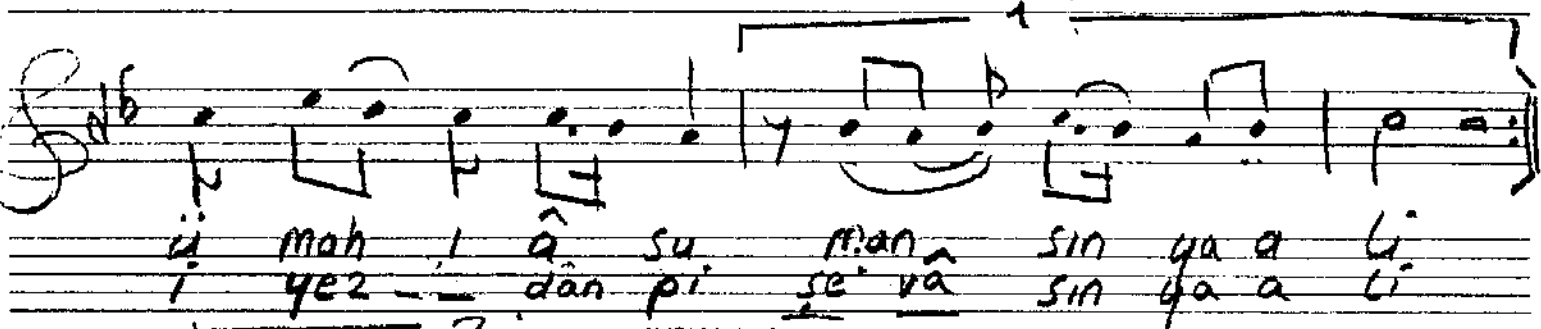
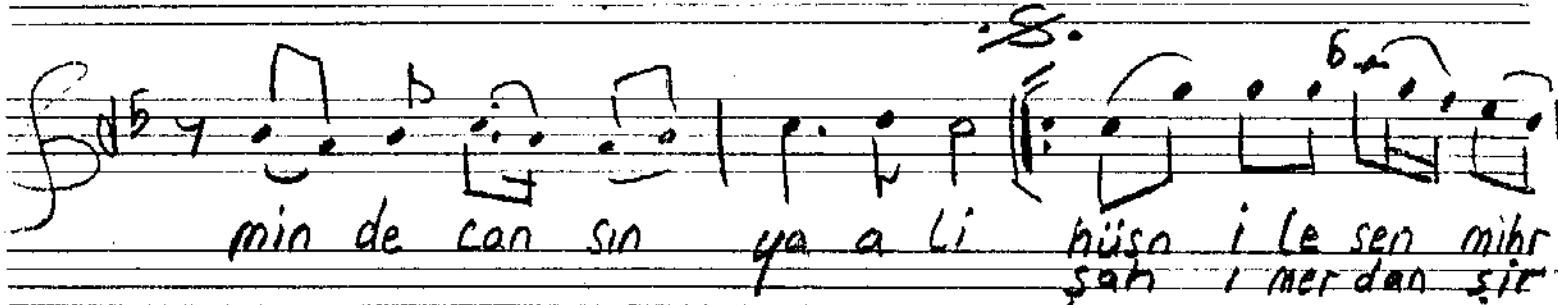
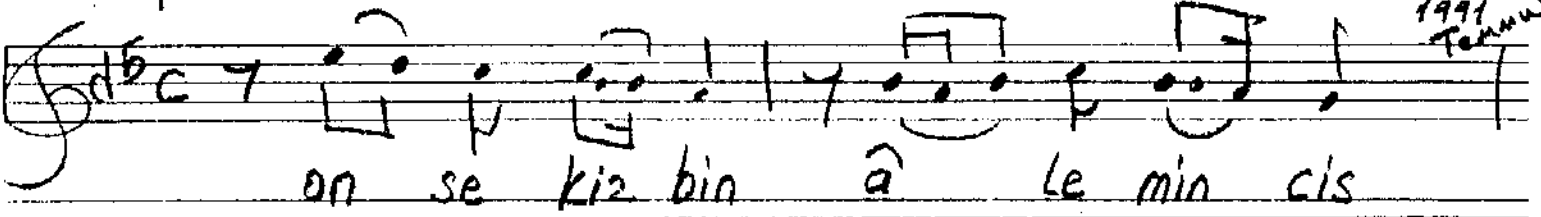


Düyek

SABA İLÂHÎ

Güfte: Pîri Mehmed Cele
Beste: M. REFIK KAYA
1991
Tahmür



Onsekiz bin âlemin cisminde cansın yâ Ali
Hüsn ile sen mihr-i mâh-ı âsmansın yâ Ali
Sırrı mahfidir dehânın hurde-dansın yâ Ali
Sâh-ı merdan sır-i yerdan pisevasın yâ Ali

Hüsn = Güzellik

sâhı merdan = mertlerin rahı

mihr-i mâh = Güneş, ay

sır = Aslan Yerdan = Allah

mahfi = gizli, saklı

sır-i yerdan = Allahın Aslanı

Hurde dan = dikkat sahibi

piseva = Reis